

Installation Manual

ZGuard Mounting Options

Above-Counter Heavy-Duty Flange (EZ-Span)

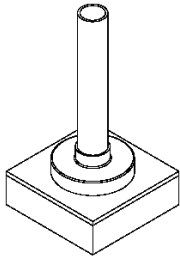


FIGURE 1

(Entire EZ-Span unit not shown) Lift EZ-Span unit up until bottom of 1.5" diameter post clears internal heavy duty post and flange and carefully set unit aside. Use care on units with wire chase to prevent damage to wires. Also remove decorative flange cover.

Figure 1

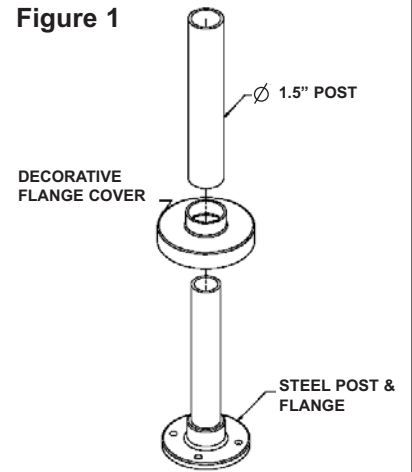


Figure 2

FIGURE 2

Fasten post and flange to mounting surface using screws provided. Tighten securely.

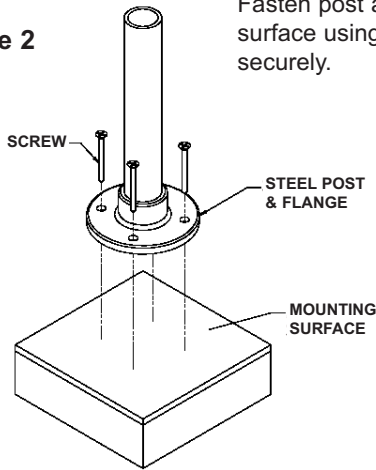


FIGURE 3

Lower decorative flange cover over steel post until it rests seated on mounting surface centered over mounting flange.

Figure 3

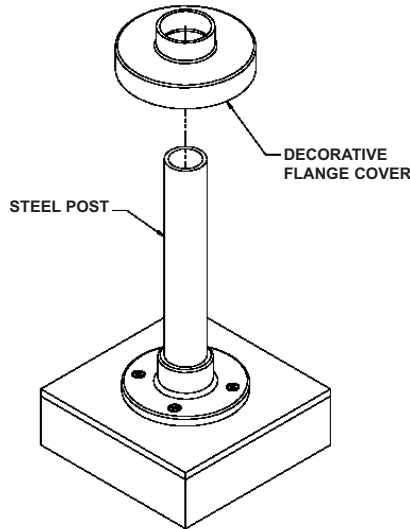
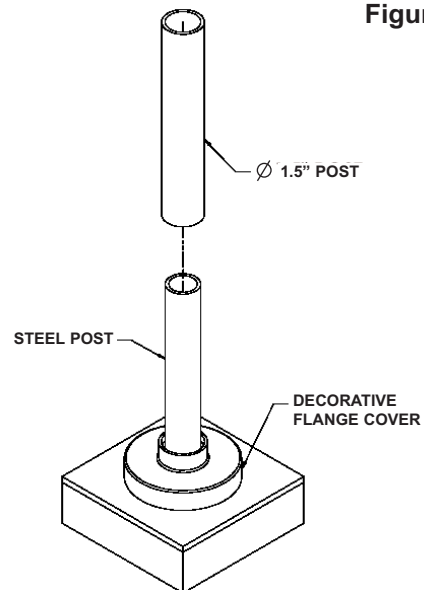


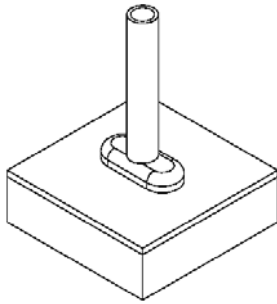
FIGURE 4

Lift EZ-Span unit up until bottom of 1.5" diameter post clears internal heavy duty post. If applicable, route wires down designated wire chase post. Bottom of 1.5" diameter post should be centered within decorative flange and sit on top of mounting flange.

Figure 4



Above Counter Narrow - MW1(A) & Heavy-Duty Flange - MW2(B) (ZGuard)



Above-Counter Narrow Flange

Determine flange mounting locations based on centerline dimensions and, if necessary, drill holes accordingly in mounting surface.



Above-Counter Heavy-Duty Flange

FIGURE 1

Fasten mount flange to counter surface using screws provided. Tighten Securely.

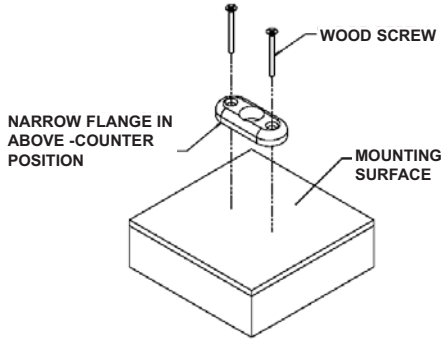


Figure 1

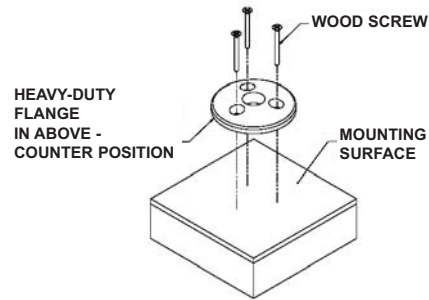


FIGURE 2

If unit has heat and/or lights, unit will arrive assembled. If unit has front and rear posts, leave mount flanges on posts. In either case, place the unit in the desired position on mounting surface, lift flange covers out of the way, and fasten attached flanges to counter using provided screws. Lower flange cover into place over flange. For units with electrical requirements, feed wire chase through hole in counter before lowering into position. Avoid damaging wires.

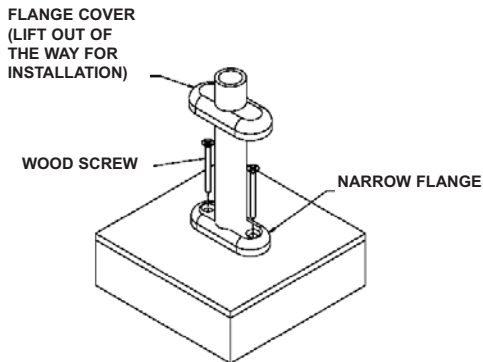


Figure 2

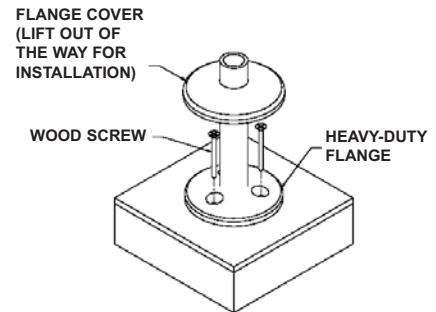


Figure 3

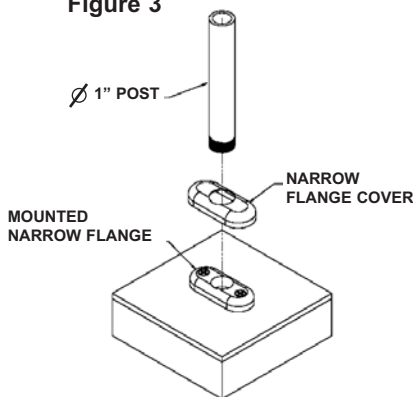


FIGURE 3 (Flange Cover & Post Installation)
Place flange cover over mounted flange.

Install 1" diameter post by screwing into flange. For straight posts, tighten securely.

For cantilever posts, add provided glue to post threads and tighten as far as possible while keeping direction of horizontal top post in desired direction (i.e., parallel with flange, etc).

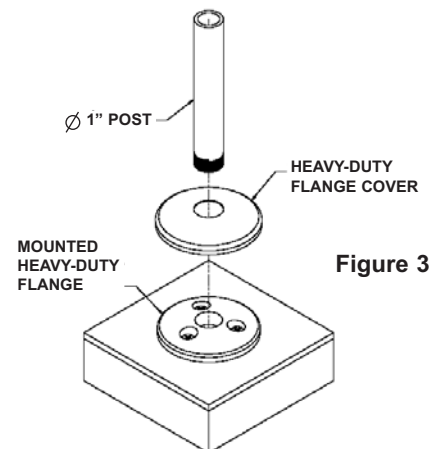
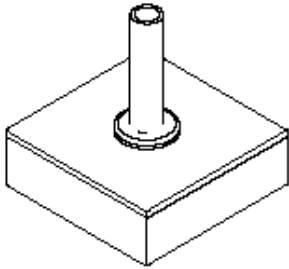


Figure 3

FOR INSTALLATION QUESTIONS PLEASE CONTACT A BRASS SMITH REPRESENTATIVE AT 1.800.662.9595

Below-Counter Compression Mount - MWU4(F)



Below-Counter Washer-Nut Mount

FIGURE 1

Determine flange mounting locations based on centerline dimensions and, if necessary, drill holes accordingly in mounting surface. Post hole diameter is 1.25" thru.

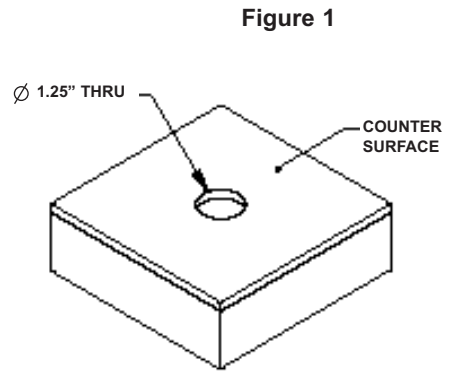


Figure 1

FIGURE 2

Remove nut and washer from post. Do not remove threaded ring. Ensure threaded ring is tightened completely up threaded portion of post.

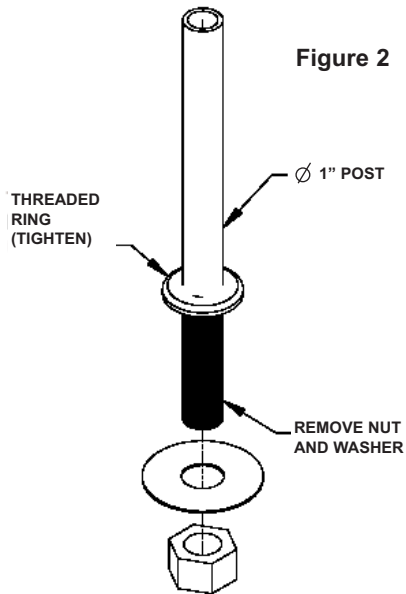


Figure 2

FIGURE 3

Install post into hole in mounting surface until threaded ring rests on counter surface. For units with electrical requirements, feed wire chase through hole in counter before lowering post into position. Avoid damaging wires.

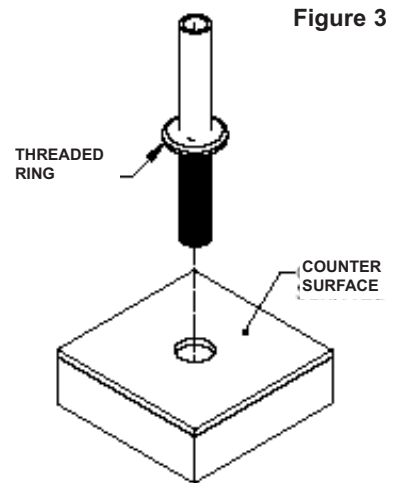


Figure 3

FIGURE 4

From underside of counter, install washer and nut over threaded end of post and tighten securely. Partial disassembly of food shield may be required for ease of lifting. **DO NOT REMOVE GLASS CLAMPS FROM POSTS.**

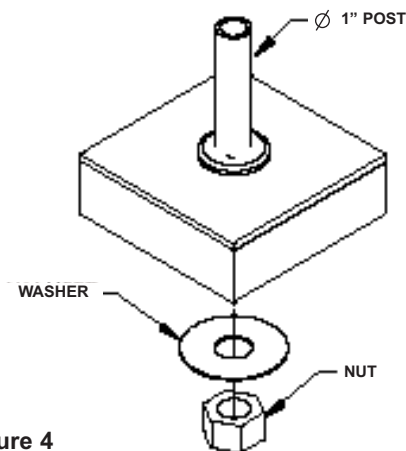
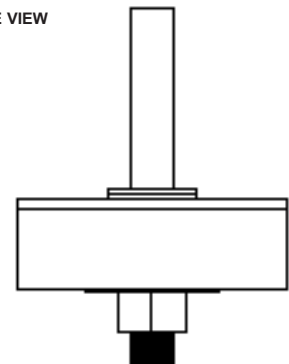
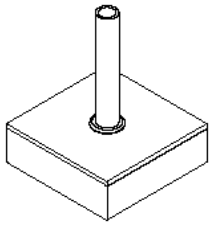


Figure 4

SIDE VIEW



Below-Counter Narrow- MWU3(C) & Heavy-Duty Flange- MWU5(C)



Below-Counter Narrow and Heavy-Duty Flange

Determine flange mounting locations based on centerline dimensions and, if necessary, drill holes accordingly in mounting surface. Post hole diameter is 1.25" thru.

FIGURE 1

Fasten mount flange to underside of counter surface using screws provided. Center threaded hole in flange with post hole in counter. Tighten Securely.

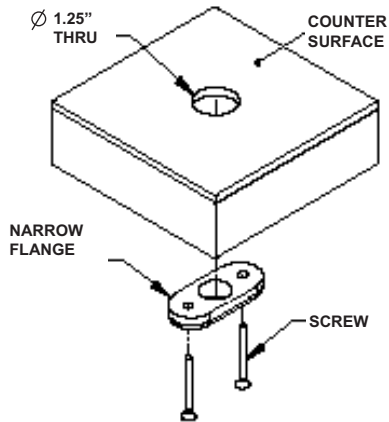


Figure 1

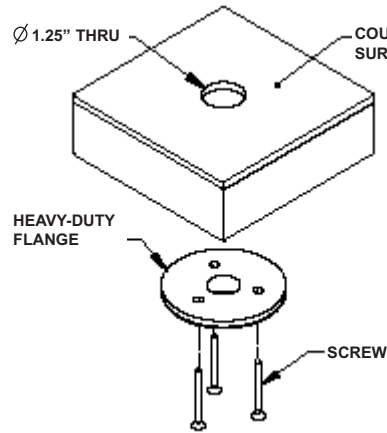


FIGURE 2

Install grommet into post hole in mounting surface. Press into hole in mounting surface until completely seated.

Figure 2

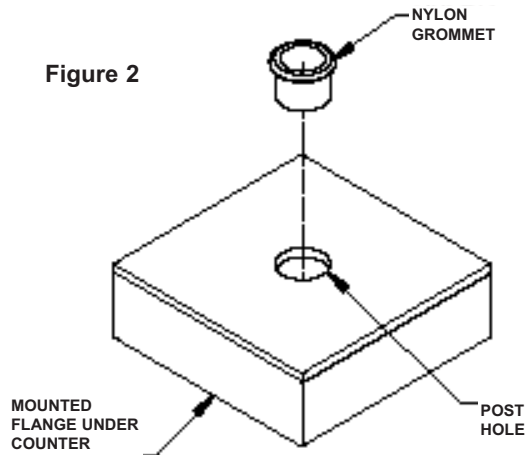


Figure 3

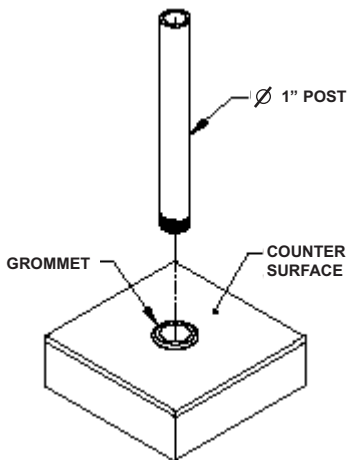


FIGURE 3

Install post from above counter surface through grommet and securely tighten into mounted flange.

Below-Counter Narrow - MWU3(C) & Heavy-Duty Flange - MWU3(C) (Continued)

FIGURE 4

If unit has heat and/or lights, unit will arrive assembled. For pre-assembled units or units with front and rear posts, remove mount flange from post. Lower post through grommet and mounting surface.

Partial disassembly of food shield may be required for ease of lifting. DO NOT REMOVE GLASS CLAMPS FROM POSTS. For units with electrical requirements, feed wire chase through grommet and mounting surface before lowering post into position. Avoid damaging wires.

Figure 4

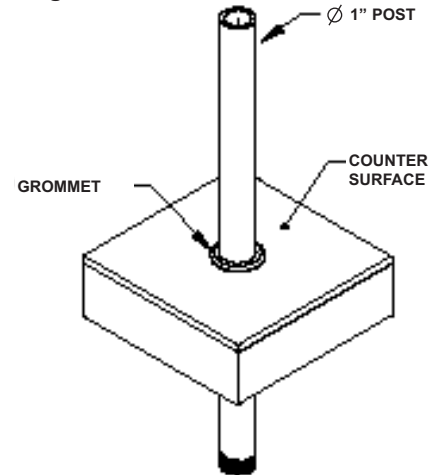


FIGURE 5

With post in lowered position, attach mount flange to threaded portion of post from underside of counter surface. Tighten securely.

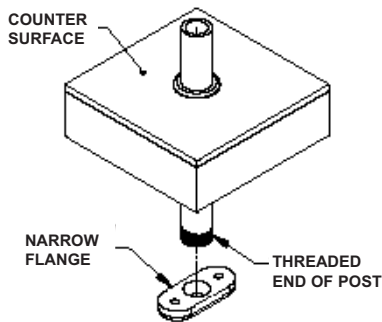


Figure 5

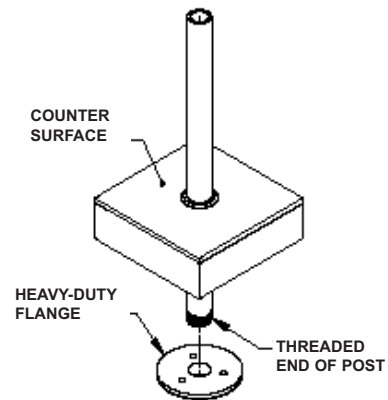


FIGURE 6

With mount flange secured to post, screw flange into underside of counter surface as shown. Securely tighten all screws.

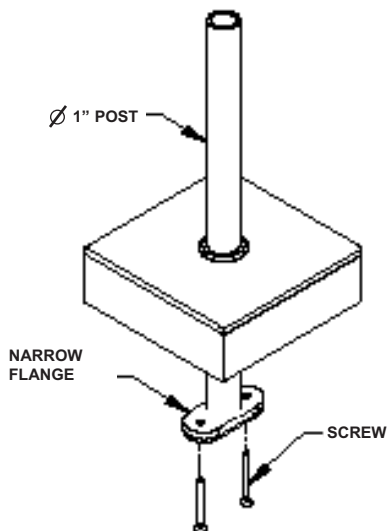
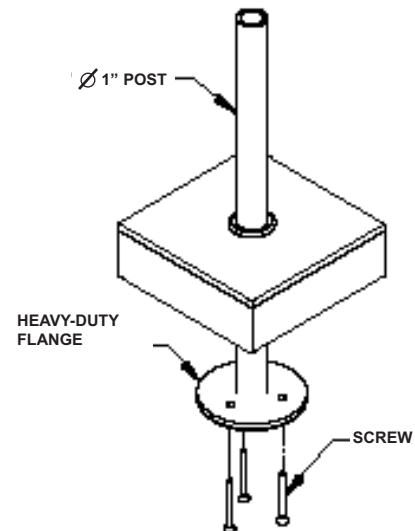
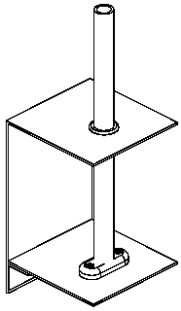


Figure 6

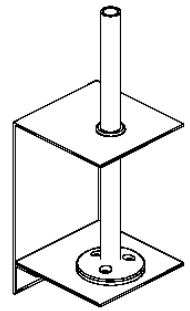


Under-Counter Narrow - SSU3(E) & Heavy-Duty Flange Mount - SSU3(E) for Stainless Steel Counters



Under-Counter Narrow Flange Mount for Stainless Steel Counters

Determine flange mounting locations based on centerline dimensions and, if necessary, drill holes accordingly in counter surface. Hole diameter to be 1-1/4" thru counter surface. Lower plate and angle to be installed below mounting location by others.



Under-Counter Heavy-Duty Flange Mount for Stainless Steel Counters

FIGURE 1
Remove mount flanges from posts. Fasten mount flange to lower plate using screws provided. For shallow under-counter depths, a bolt and nut may be required for ease of installation. Tighten mount screws securely.

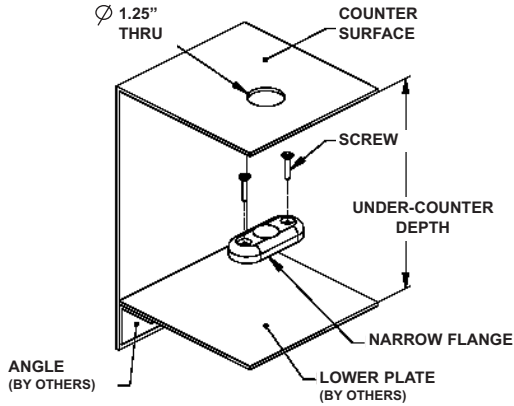


Figure 1

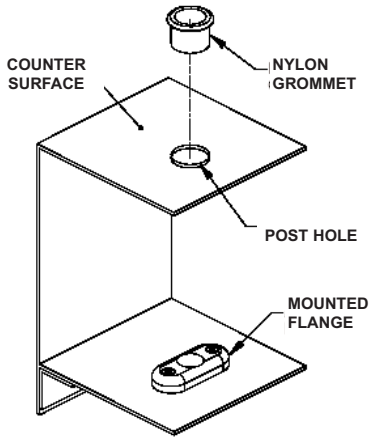
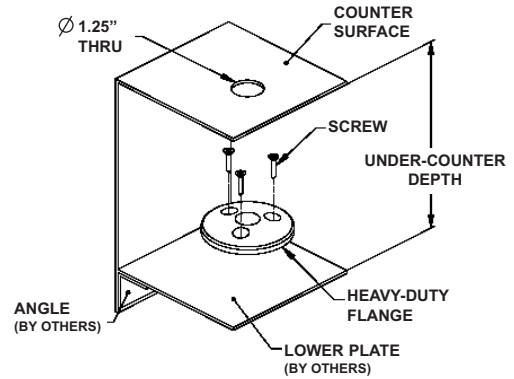


FIGURE 2
Install grommet into post hole in mounting surface. Press into hole in mounting surface until completely seated.

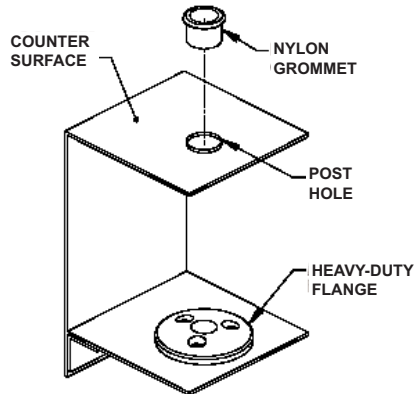


Figure 2

FIGURE 3
Install POST from above counter surface through grommet and securely tighten into mounting flange below. It may be necessary to access post from underside of mounting surface to align post with flange.

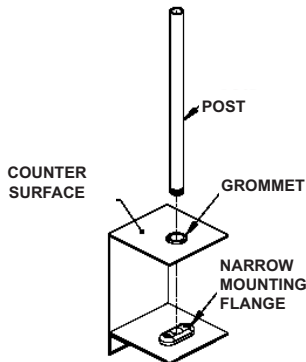
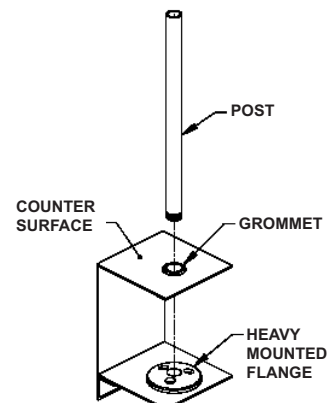


Figure 3



Under-Counter Narrow - SSU3(E) & Heavy-Duty Flange Mount - SSU3(E) for Stainless Steel Counters (Cont.)

FIGURE 4

If unit has heat and/or lights, unit will arrive assembled. For pre-assembled units or units with front and rear posts, remove mount flange from post. Lower post through grommet and mounting surface.

Partial disassembly for food shield may be required for ease of lifting. DO NOT REMOVE GLASS CLAMPS FROM POSTS. For units with electrical requirements, feed wire chase through grommet and mounting surface before lowering post into position. Avoid damaging wires.

Figure 4

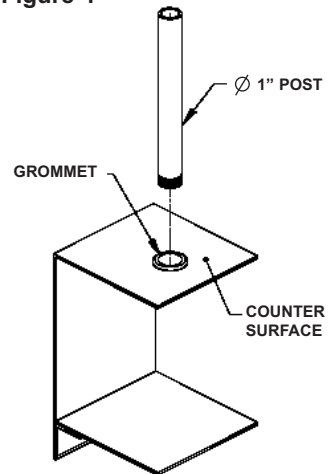


FIGURE 5

With post in lowered position, attach flange to threaded portion of post from underside of counter surface. Tighten securely.

Figure 5

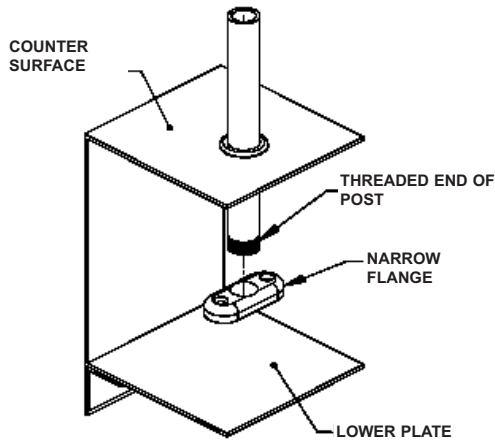


Figure 5

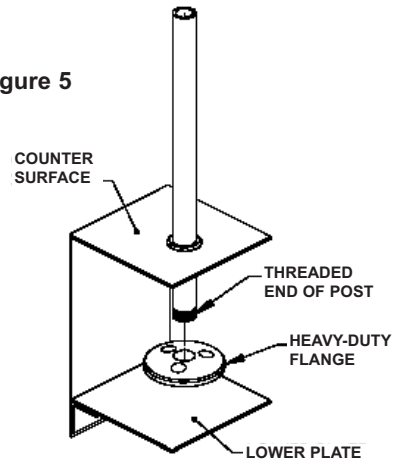


FIGURE 6

With flange secured to post, screw flange into lower plate from underside of counter surface as shown. Securely tighten all screws.

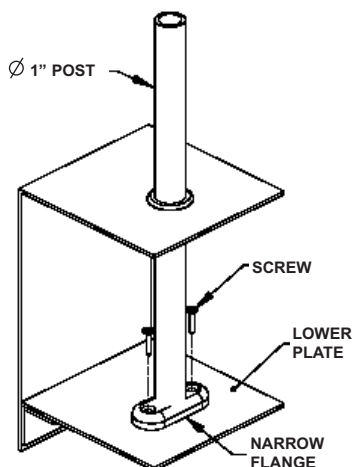
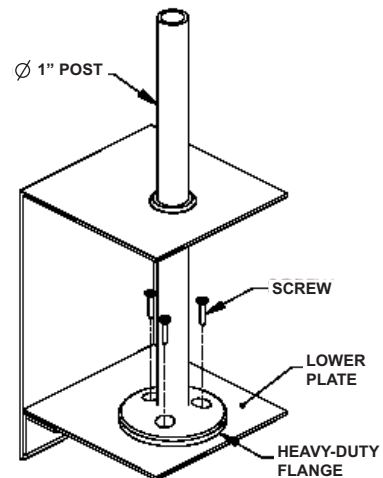
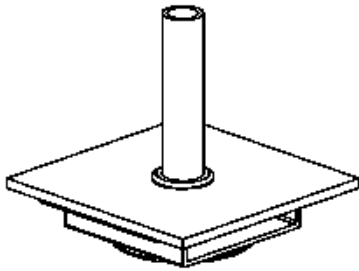


Figure 6



Under-Counter Hat Channel for Narrow (not shown) & Heavy Duty Flange Mount - SSU3(E)



Under-Counter Hat Channel and Heavy Duty Flange

FIGURE 1
Determine flange mounting locations based on centerline dimensions and, if necessary, drill holes accordingly. Hole diameter to be 1-1/4" thru counter surface and hat channel. Hat channel to be installed below mounting location by others.

Remove mount flange and fasten to hat channel using screws provided. Tighten Securely.

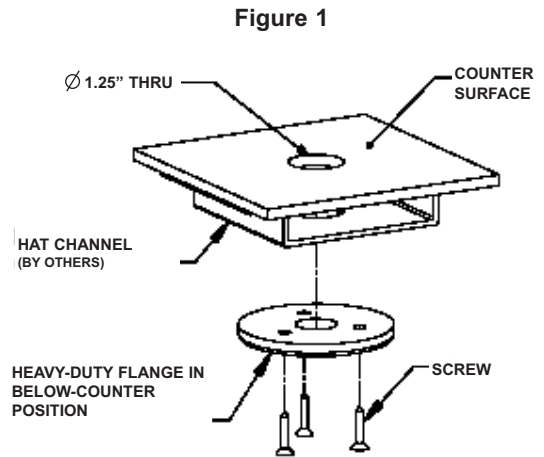


FIGURE 2
Install grommet into post hole in counter surface. Press into hole until completely seated.

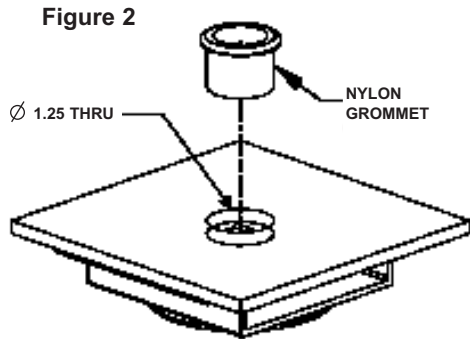
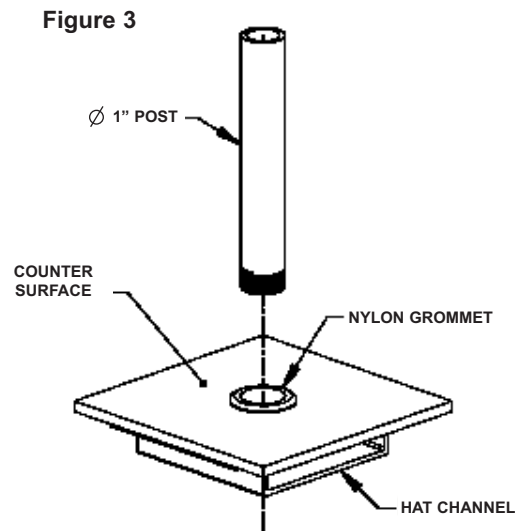
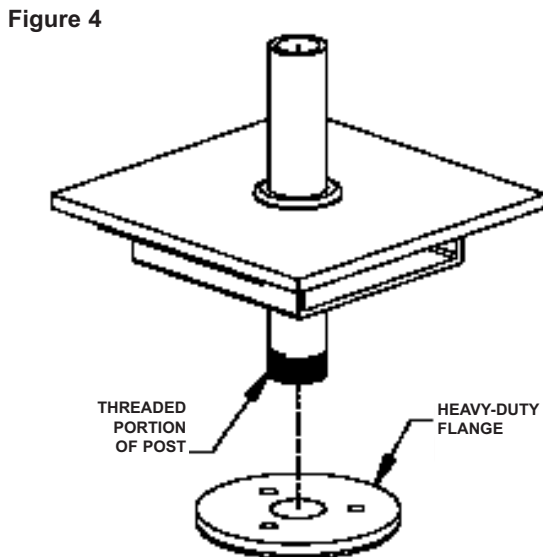


FIGURE 3
If unit has heat and/or lights, unit will arrive assembled. For pre-assembled units or units with front and rear posts, lower POST through grommet, counter surface and hat channel. Attach flange to post and fasten to hat channel. Partial disassembly of food shield may be required for ease of lifting. DO NOT REMOVE GLASS CLAMPS FROM POSTS. For units with electrical requirements, feed wire chase through grommet, mounting surface and hat channel before lowering post into position. Avoid damaging wires.

FIGURE 4
With post in lowered position, attach heavy-duty flange to threaded portion of post from underside of hat channel. Tighten securely.



Under-Counter Hat Channel & Heavy-Duty Flange Mount - SSU3(E) (Continued)

FIGURE 5

With heavy-duty flange secured to post, fasten flange onto hat channel from underside of hat channel as shown. Securely tighten all screws.

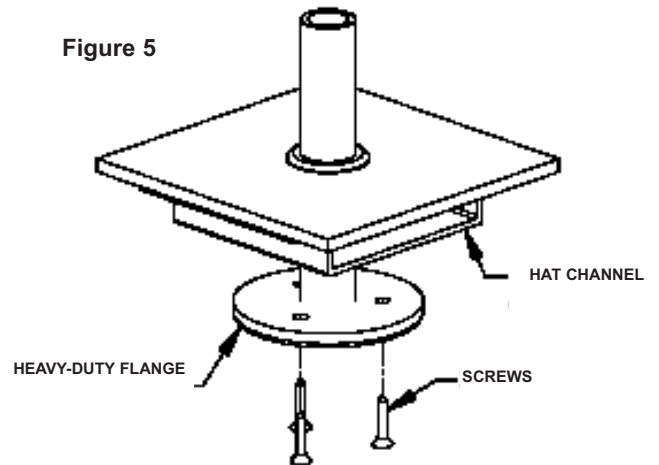
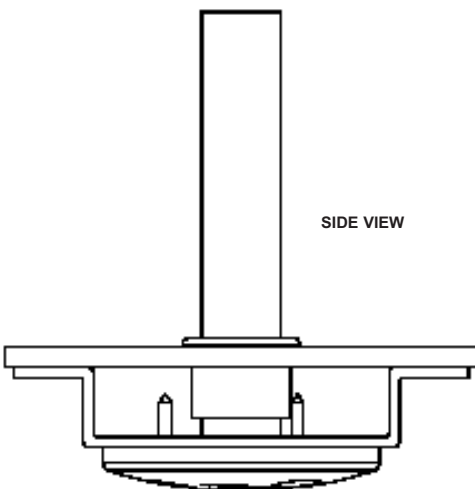
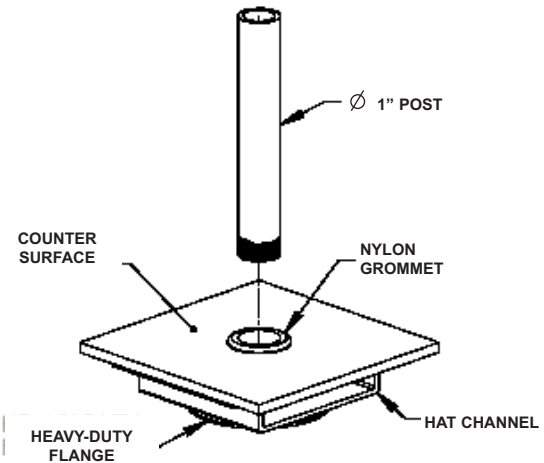


FIGURE 6

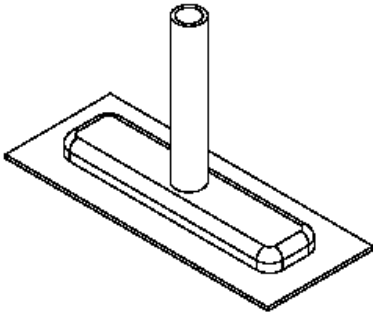
For units shipped loose, single vertical posts, cantilever, or units without electrical requirements, lower post through grommet, counter surface, and hat channel, and tighten into previously installed heavy-duty flange. Tighten securely.

If unit is cantilever, apply thread glue to threads of post and tighten as far as possible while keeping top post in desired direction. Avoid using top post to tighten. Repeat process for all required mounting locations.

Figure 6



Centered EZ Mount Flange - SS1



Centered EZ Mount Flange

FIGURE 1 (Base Plate Installation)
 Determine flange mounting locations based on centerline dimensions and, if necessary, drill holes accordingly in mounting surface to the dimensions shown. (Note that center mount hole is optional and also the center of the 1" diameter post. This hole will be punched larger for wire chase on units with electrical requirements).

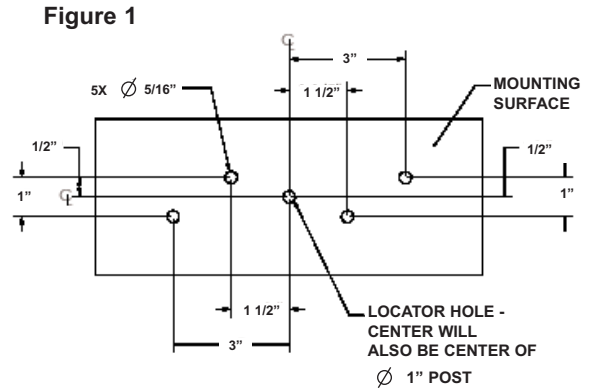


FIGURE 2

Fasten EZ mount base plate to counter. Use four provided RIV nuts and one provided hex head screw. Completely tighten each RIV nut using hex head screw, ensuring that RIV nuts are completely compressed beneath mounting surface. Remove hex head screw after compressing each RIV nut.

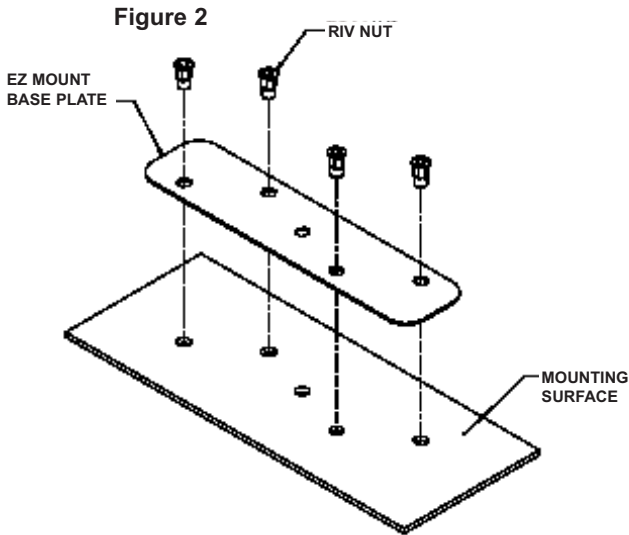


FIGURE 3

(Mount Flange Installation)

Align holes on EZ mount flange with holes in base plate. Fasten flange to base plate using screws provided. Tighten screws into RIV nuts completely.

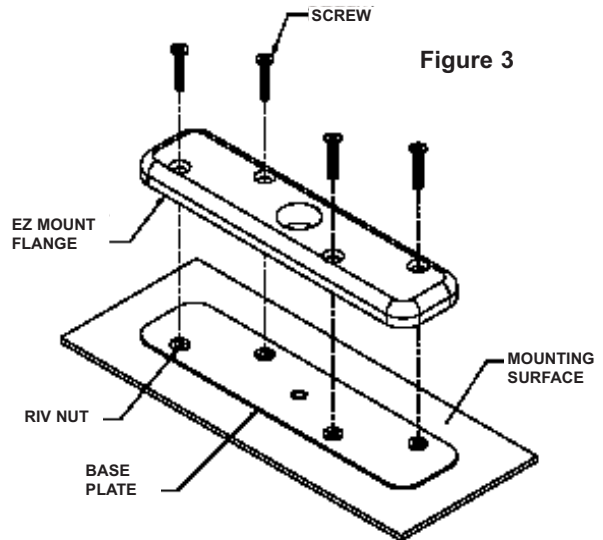


FIGURE 4 (Flange Cover & Post Installation)

Place flange cover over EZ mount flange. Install 1" diameter post by screwing into flange. For straight posts, tighten securely.

For cantilever posts, add provided glue to post threads and tighten as far as possible while keeping direction of horizontal top post in desired direction (i.e., parallel with flange, etc). Repeat process for all required mounts.

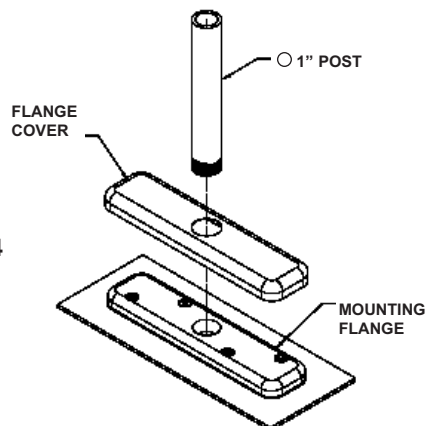
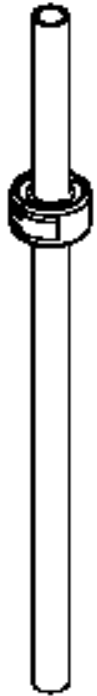


Figure 4

ZSpace EZ-Clamp

FIGURE 1

Open EZ CLAMP by prying open latch. Open clamp to fullest extent.



ZSpace EZ Clamp

FIGURE 2

With clamp in open position, place over 1" diameter post at desired height. Make sure post is centered within inner sleeve of clamp.

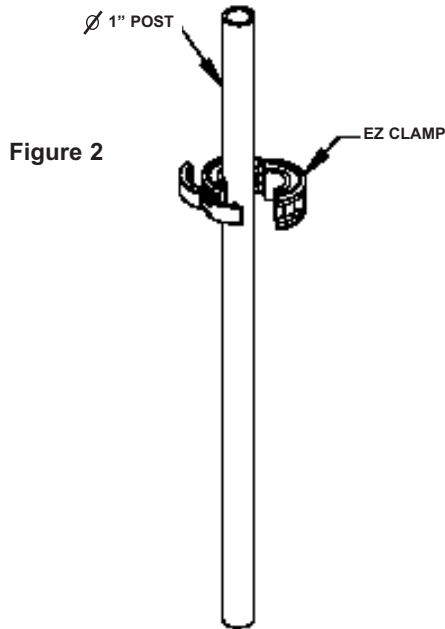


Figure 2

Figure 1

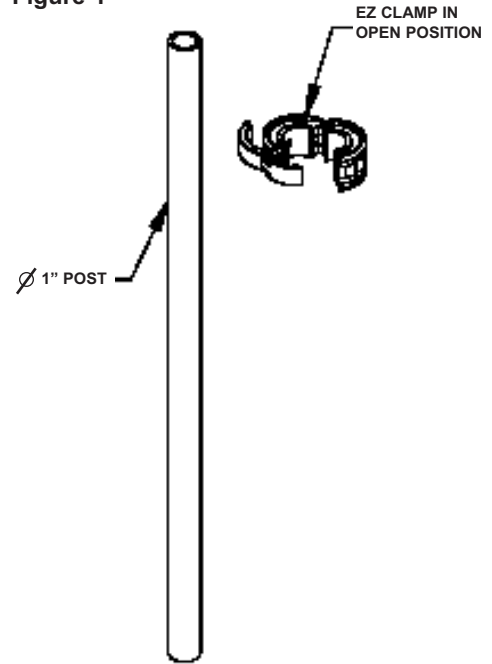


FIGURE 3

Squeeze clamp shut and close by hooking bracket latch over clamp. Press latch handle into clamp until fully closed. Clamp should fit tightly over post with no movement.

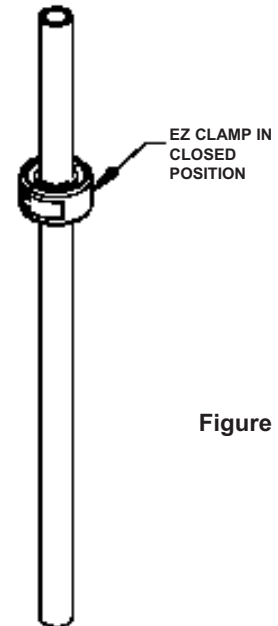


Figure 3

Figure 4

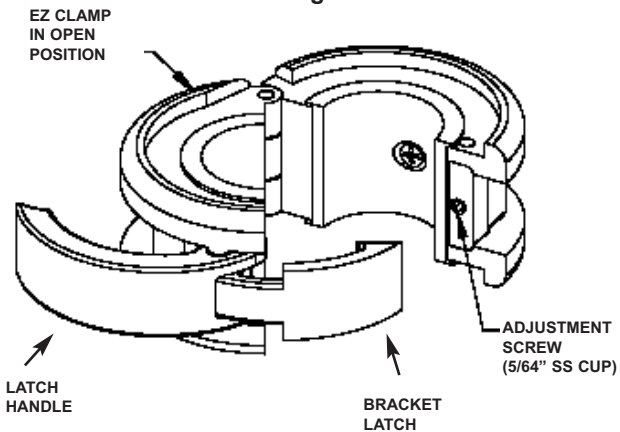


FIGURE 4

If clamp is too tight or too loose on post, it requires adjustment. Open clamp and locate the adjustment screw on the inside face of the clamp (opposite bracket).

If clamp is too tight, tighten the adjusting screw using a 5/64" allen wrench in small increments. Check fit on post after each slight adjustment until proper fit is achieved.

If clamp is too loose, loosen the adjusting screw using a 5/64" allen wrench in small increments. Check fit on post after each slight adjustment until proper fit is achieved.